

66.999.5.0022BKT - NOVA 2 LED COMBI EDGE SHORT
METAL PLATE 230-240V/50Hz RAL 9006
66.999.5.0030BKT - NOVA 2 + 2L LED COMBI EDGE SHORT + LONG
METAL PLATE 230-240V/50Hz RAL 9006

66.999.5.0023BKT - NOVA 2L LED COMBI EDGE LONG
METAL PLATE 230-240V/50Hz RAL 9006



KUNZLE & TASIN
Via CAJKOVSKIJ 14-20092-CINISELLO BALSAMO (MI)
TEL. 02/66040930 FAX 02/66013445

NOVA2 Combi Edge

METAL PLATE 230-240V/50Hz

KT-BONA

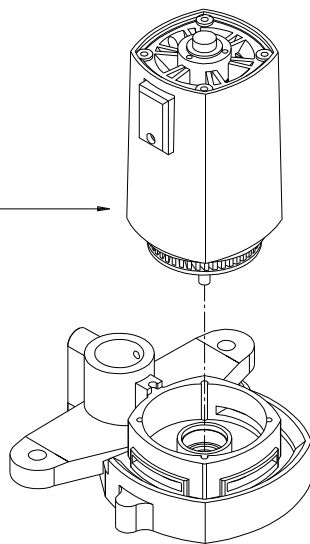
PAGE 1/6

FEBRUARY 2016

68.999.4.0028

MOTOR + CONVEYOR
230-240V/50Hz

66.000.3.0030
MOTOR 230-240V/50Hz



66.000.4.0001NO
CONVEYOR

66.000.3.0030

MOTOR 230-240V/50Hz

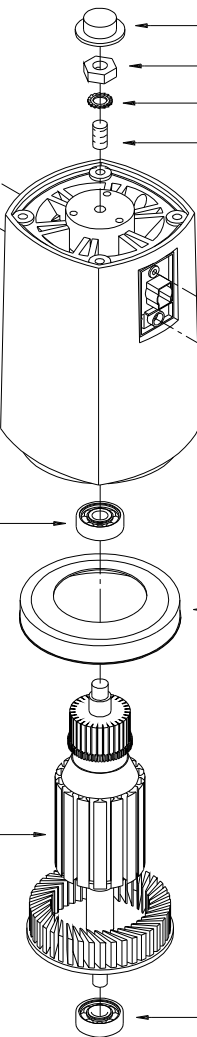
58.002.3.0404
N°2 SELF-LOCKING SCREW (VTCIC) M4x12

66.000.3.0039
N°2 CARBON BRUSH

66.000.3.0045
230-240V/50Hz

58.040.3.5003
BEARING 629 2RS

66.000.3.0036
230-240V/50Hz



66.000.3.0041

LOW NUT M8 58.019.3.4001

NOTCHED WASHER M8 58.022.3.2004

GRAIN M8x14 58.015.3.0007

58.022.3.2001
N°2 NOTCHED WASHER M4

58.002.3.0405
N°2 SELF-LOCKING SCREW (VTCIC) M4x6

66.000.3.0038

66.000.3.0040

58.040.3.5004
BEARING 6201 2RS



KUNZLE & TASIN
Via CAJKOVSKIJ 14-20092-CINISELLO BALSAMO (MI)
TEL. 02/66040930 FAX 02/66013445

NOVA2 Combi Edge

METAL PLATE 230-240V/50Hz

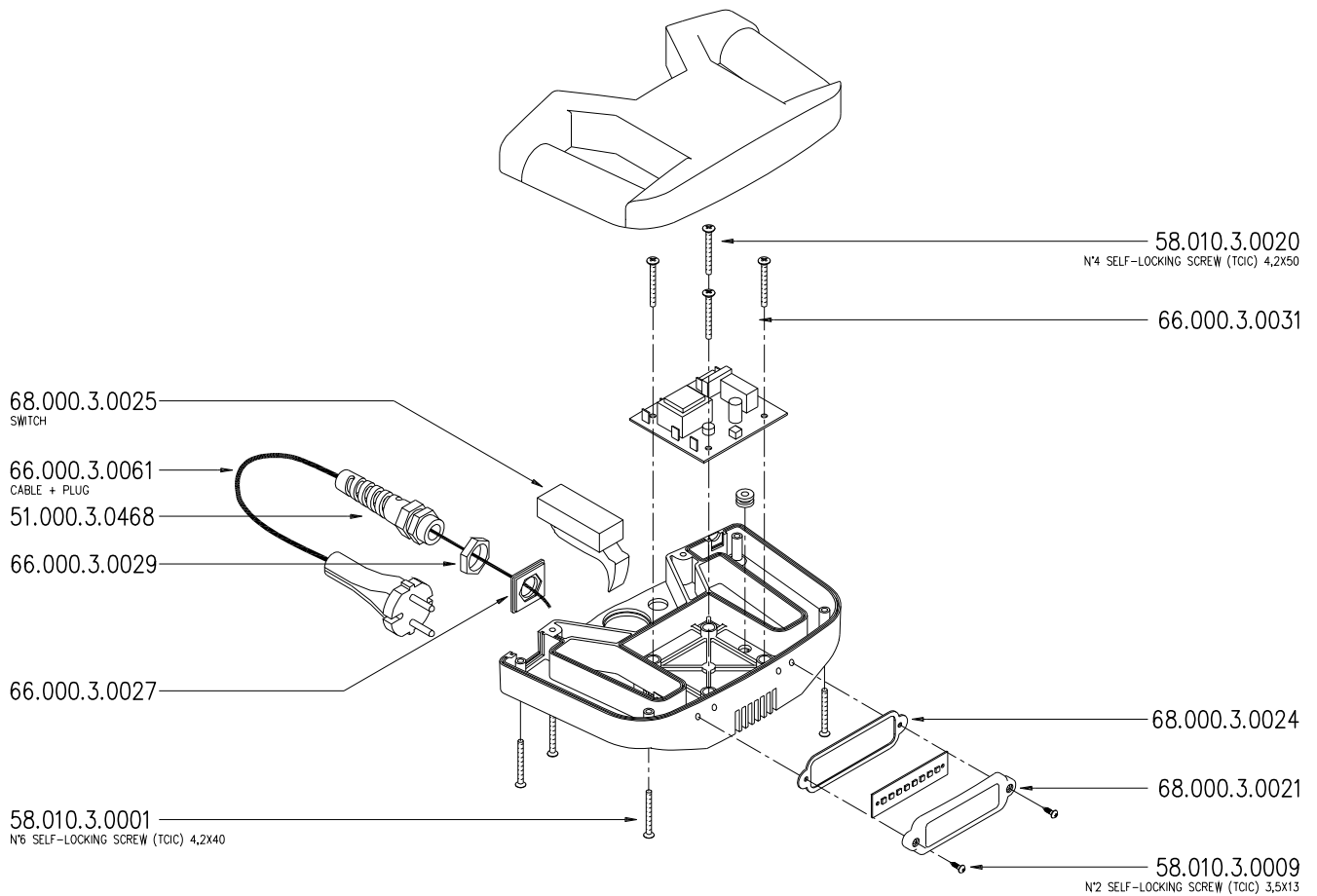
KT-BONA

PAGE 2/6

FEBRUARY 2016

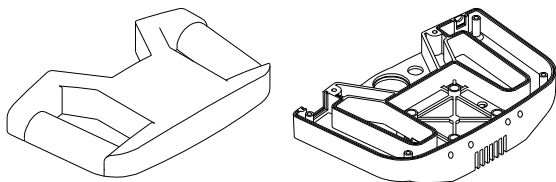
COMPLETE HANDLE

230-240V/50Hz



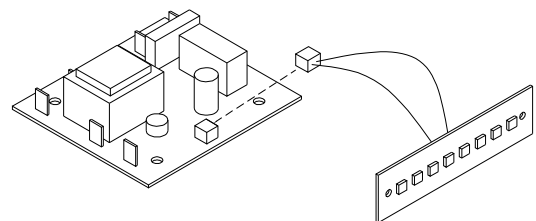
66.999.4.0033

HANDLE SHELLS UL (pair only)



68.999.4.0053

LED CARD GROUP 230V/50Hz



KUNZLE & TASIN

Via CAJKOVSKIJ 14-20092-CINISELLO BALSAMO (MI)
TEL. 02/66040930 FAX 02/66013445

NOVA2 Combi Edge

METAL PLATE 230-240V/50Hz

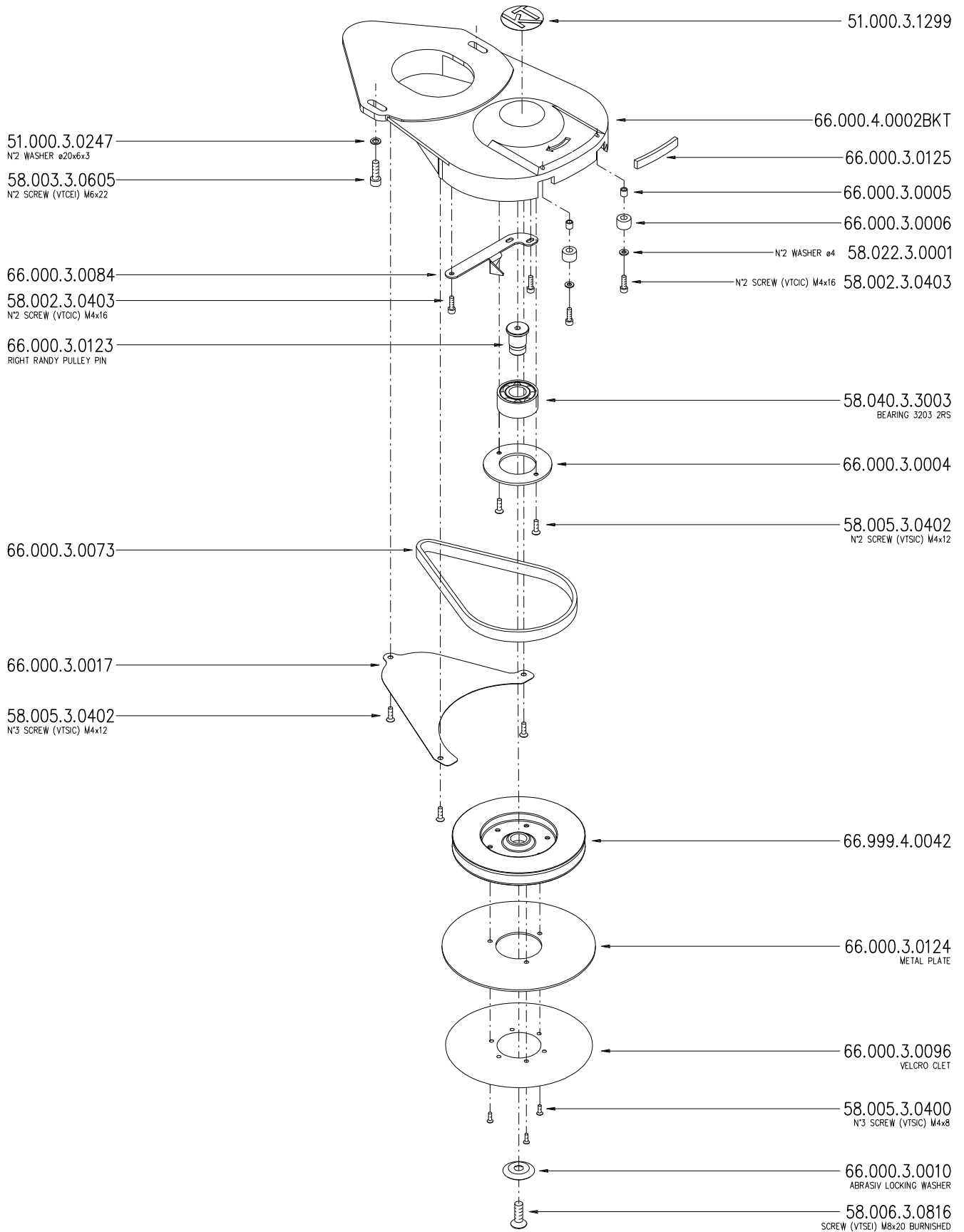
KT-BONA

PAGE 3/6

FEBRUARY 2016

66.999.4.0022BKT

METAL PLATE COMPLETE SHORT ARM RAL 9006



KUNZLE & TASIN
Via CAJKOVSKIJ 14-20092-CINISELLO BALSAMO (MI)
TEL. 02/66040930 FAX 02/66013445

NOVA2 Combi Edge

METAL PLATE 230-240V/50Hz

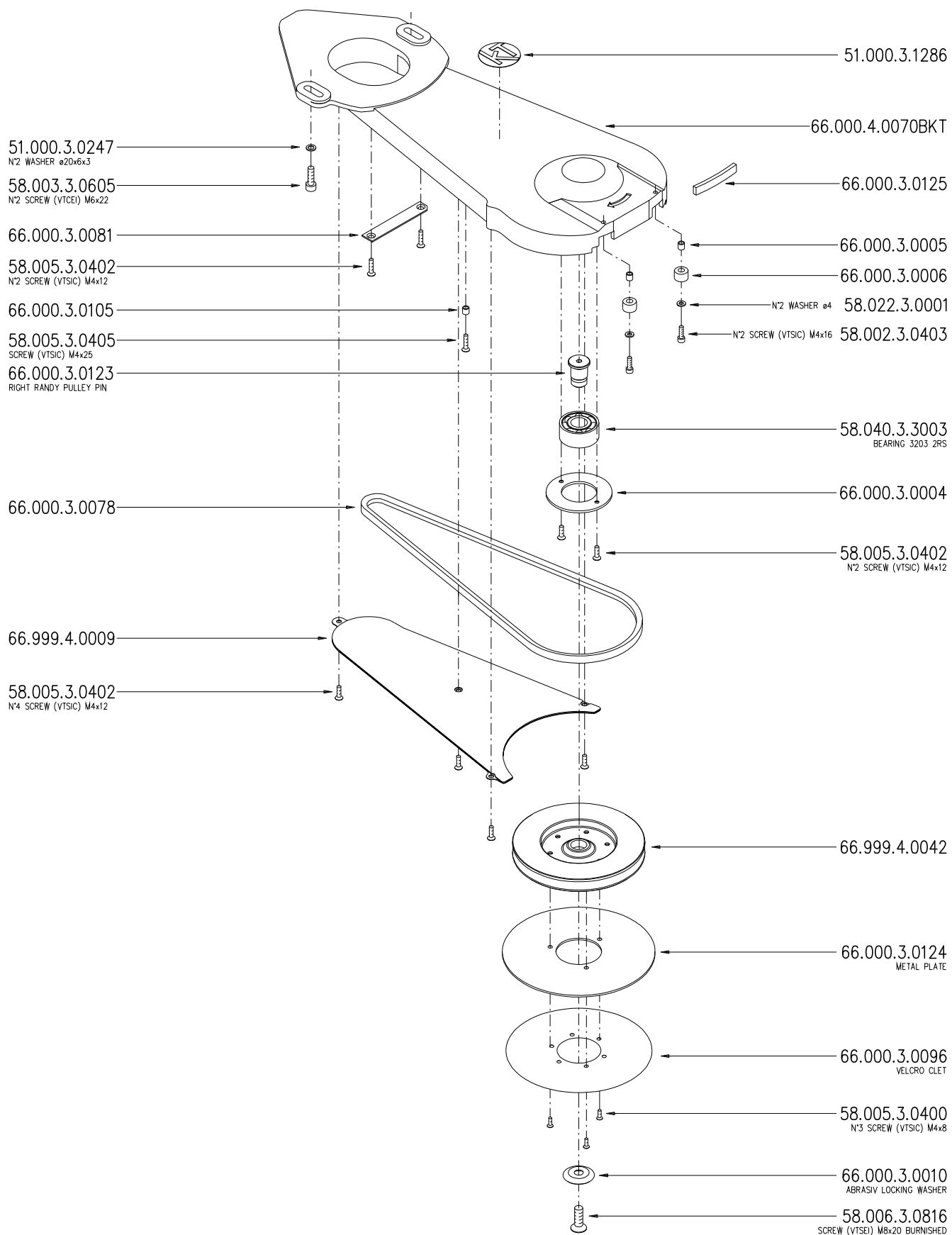
KT-BONA

PAGE 4/6

FEBRUARY 2016

66.999.4.0021BKT

METAL PLATE COMPLETE LONG ARM RAL 9006



KUNZLE & TASIN
 Via CAJKOVSKIJ 14-20092-CINISELLO BALSAMO (MI)
 TEL. 02/66040930 FAX 02/66013445

NOVA2 Combi Edge

METAL PLATE 230-240V/50Hz

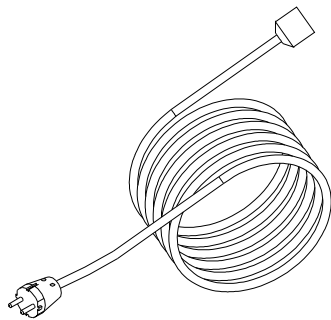
KT-BONA

PAGE 5/6

FEBRUARY 2016

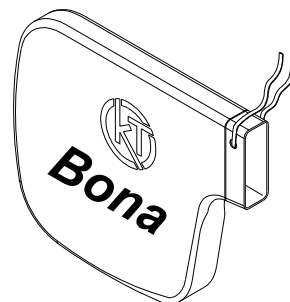
29.000.3.0115

7 MT 3x2,5 MM POWER CABLE
(SCHUKO SOCKET AND PLUG)



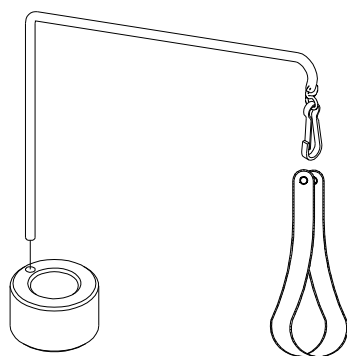
AS0992003

FABRIC DUST BAG (UE)



66.999.4.0142

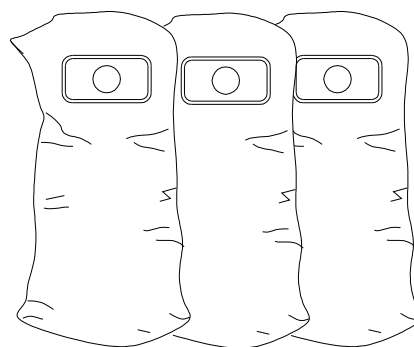
PAPER BAG HOLDING BAR GROUP



EXTRA ITEM

66.000.3.0142

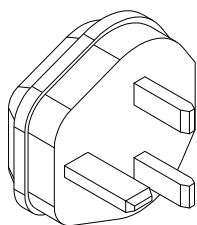
3 PAPER DUST BAGS BLISTER



EXTRA ITEM

51.000.3.1283

PLUG ADAPTER 13A UK

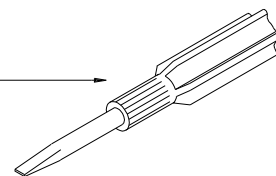


EXTRA ITEM

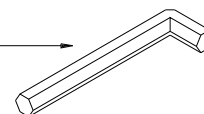
66.999.4.0020

TOOL BAG

51.000.3.0145
REVERSIBLE SCREW DRIVER



02.000.3.0299
ALLEN WRENCH 5



KUNZLE & TASIN

Via CAJKOVSKIJ 14-20092-CINISELLO BALSAMO (MI)
TEL. 02/66040930 FAX 02/66013445

NOVA2 Combi Edge

METAL PLATE 230-240V/50Hz

KT-BONA

PAGE 6/6

FEBRUARY 2016